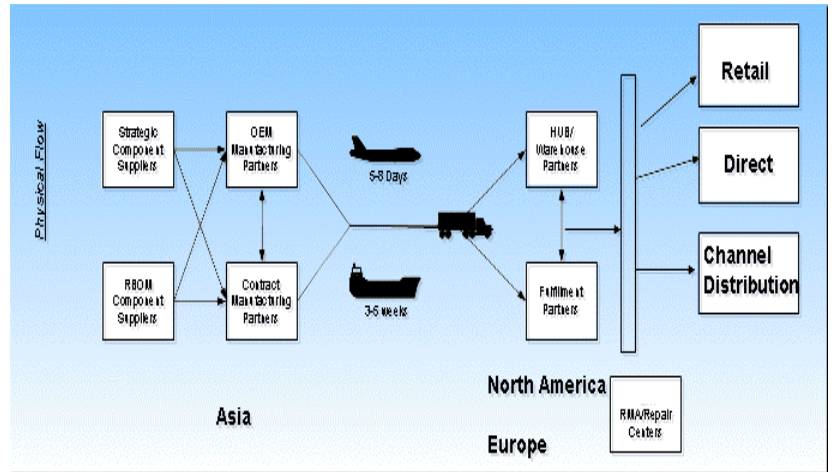


# DCRA Order Commitment Solution

## Powered by the Dynamic Logistics Synchronization and Visibility Platform

**Summary of Value Proposition:** The DCRA Order Commitment Solution provides tremendous cycle time reduction in knowing and managing supply chain data but also can be tuned to provide specific role based order and inventory promising views. Typical customers with significant multi-site operations and outsourced relationships can see information access reduced from weeks to seconds for key customer commitments. Others have found the Order Commitment Solution the perfect tool to leverage and sell inbound and supplier investments in inventory without taking ownership of saleable goods.

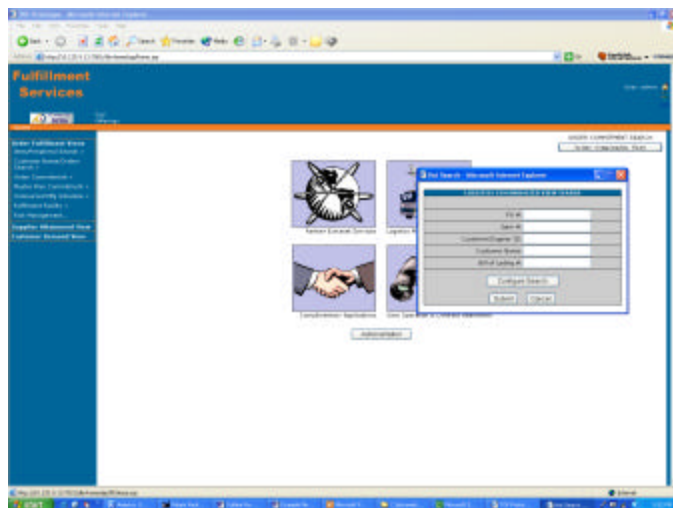
The DCRA Order Commitment Solution, built on the Dynamic Logistics Synchronization and Visibility (DLSV) platform, has been specifically designed to provide users high value added functionality that compliments their dominant enterprise applications. Although the Order Commitment Solution can run as a standalone application, it is even more powerful when complimenting a global logistics tracking application, an order entry application, a warehouse management system, or a manufacturing planning application (like DCRA's Sales and Operations Planning Solutions). In these workflows your administrator can directly link information from your applications into the Order Commitment Solution providing cross enterprise visibility and order commitments inside and outside of the four walls of your business. This information is vital in making the hard decisions on order commitments based on ever changing sales patterns allowing organizations to make the most profitable, customer centric decisions.



The Order Commitment Solution ties together real time information from numerous applications and presents this data to the users in a related fashion. This is the key to empowering your skilled staff to leverage their years of domain experience in making the right decisions for your organization and its customers. Users will now see all orders with current status and dynamic inventory positions throughout your end-to-end supply chain. This can include, but is not limited to, retail shelf stock, distribution centers, merge and kitting centers, suppliers stock, in-transit inventory in any mode, internal and outsourced production schedules, and other possible sourcing options within your network.

## The Unstructured Order Commitment Search

*When you don't know, ask all the members of your extended supply chain for status on PO's, items, shipment ID's, customer orders, and outsourced partner information.*

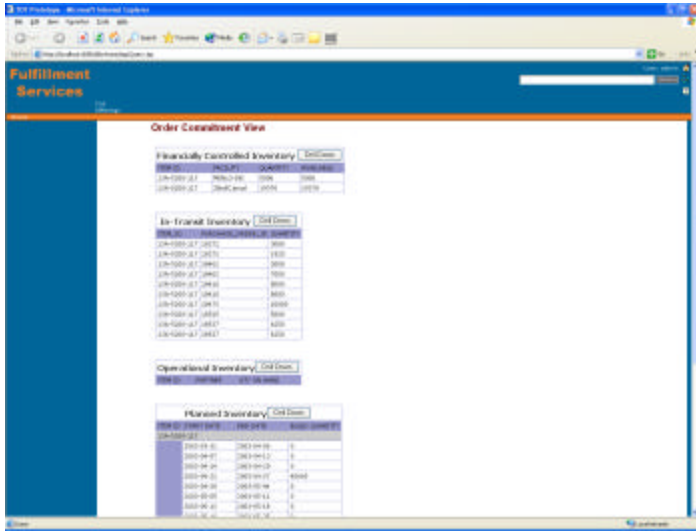


This capability has been designed to fill a need found in many cross company multi-application logistics projects. Typically these projects must cross reference and link many different companies systems and reference numbers across multiple transactional and monitoring systems in order to get, at best, a parochial view of the day to day execution of the supply chain. The Order Commitment Solution utilizes a leading edge technology to emulate the "Google Like" search across all supporting applications **without requiring persistence of data**. This allows agility in the deployment method for each user improving time to value and continued leverage of the Order Commitment Solution.

The screen shot, pictured to the left, shows how any user, regardless of experience and or role, can find the relevant supply chain status and insight through a PO number, item number, customer number, bill of lading manifest number, or

any other key value within your extended supply chain. The Order Commitment Solution provides a broad status on this reference across all applications mapped into the solution registry and linked via the DLSV data mapping utility. In general

this provides insight not obtainable except through significant time (days and weeks) of research. The advantage of the Order Commitment Solution is that it allows the user to think about how to leverage inventory, orders, and customer needs and spend much less time researching relevant “data” that often becomes stale by the time the entire research was done.

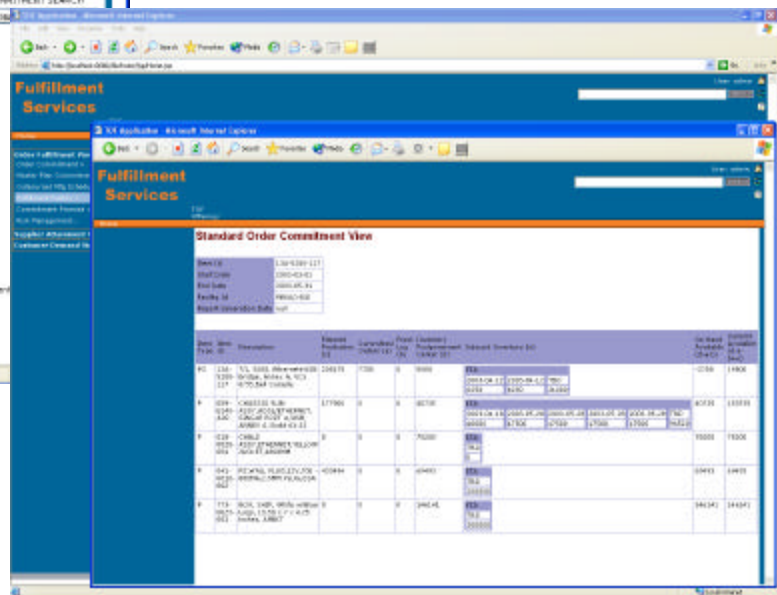
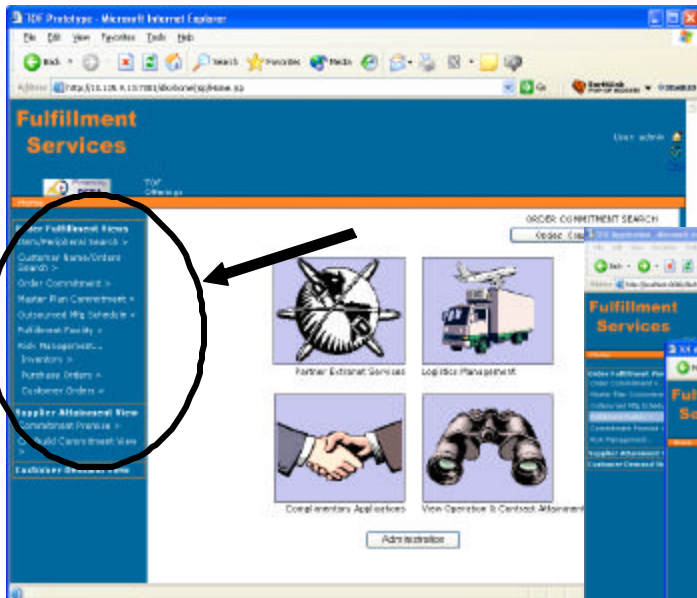


These results show how the item number is allocated across your network. Notice that the Order Commitment Solution shows current inventory positions, in-transit inventory as well as displays planned production from an outsourced manufacturing center. One end goal of the Order Commitment Solution is to allow orders to be committed against planned (or spot) production cycles based on the available lead times for the order. This gives your organization new pricing and customer service flexibility all with the focus of revenue and profit generation.

## The Structured Order Commitment

The Order Commitment Solution provides pre-developed, precise time phased views of the inventory and order commitment data targeted at the primary job roles in your organization. You can have specific views that relates to the order fulfillment group, the warehouse operation linked to inbound and outbound shipments, the view of what material is actually available

against last weeks or this weeks mater plan, a role based view for the inventory manager within a facility or across facilities and additional roles such as a real-time view of the inventory balance sheet. The screen below shows a structured order commitment view for the inbound inventory manager at a distribution center.



Note: This is just one of dozens of targeted role based view of your supply chain order and inventory data that can be generated quickly and efficiently without replacing or re-storing data.

## Other Key Features of the DLSV Platform and Order Commitment Solution

- Multi-platform (runs on most major operating systems and hardware)
- Developed around the user experience to save real users, real time
- Combines the best of order promising ATP logic with real time integration to supply chain execution
- Integrates with master plans and time phased data sources to give much more valuable insight than just on-hand inventory balances
- Advanced algorithmic logic applied in real time connections to source systems
- Quick and inexpensive to deploy
- Provides a needed bridge between supply chain plans and logistics execution of day to day operations
- Proven ROI on deployment
- Highly scalable
- Highly adaptable with its XML integration engine to nearly all sources of data (EDI, database access, flatfiles, etc.)
- Web services enabled to leading logistics and supply chain partners
- Solution easily hosted in a private network for fast and secure deployment
- Highly adaptable DLSV platform for real-time and dynamic supply chain solutions

## Tight linkage to DCRA's Distributed Sales and Operations Planning Solutions

The screenshot displays a web application interface with three overlapping windows. The top window, titled 'Fulfillment Services', shows a navigation menu with options like 'Show Plans & Docs', 'Share Executive Data', 'Supplier Collaboration', 'Customer Collaboration', and 'Messaging Services'. The middle window, titled 'DCRA S&OP', shows a 'View Plans' section with a table of plans. The bottom window, titled 'http://localhost:7001/asp/viewPlan.do', displays a detailed data table for a 'Master Plan for SPG Hardware for 03/24/2003'.

	A	B	C	D	E	F	G	H	I	J	K	
1	-Master Plan for SPG Hardware for 03/24/2003											
2												
3	811,088,981	3,243,330	3,314,466	4,744,133	4,784,420	4,214,477	4,285,514	5,555,111				
4			130	11								
5	Demand											
6	Non-rolling Dmnd											
7	Backlog	10										
8	Frontlog	1000										
9	On-Hand	15115										
10	PCVn-transit											
11	Inventory (Tgt-Wks)											
12	Supply Plan											
13	Note											
14	Inventory (Projected)	14995	14994	14994	14994	14994	14994	14994	14994	14994	14994	
15	Inventory (Proj-Wks)	125	1363									
16												
17	Demand	811,088,982	3,243,330	3,314,466	4,744,133	4,784,420	4,214,477	4,285,514	5,555,111			
		4022	969	1073	3073	1053	1039					

## Other Service Offerings from DCRA:

### Diagnostics Services

- Full diagnostic services for operational supply chain and order fulfillment services
- Network inventory optimization

### Strategy Services

- Supply chain and logistics support for business strategy
- IT strategy to support supply chain strategy diagnostics
- Supply Chain technology vendor management strategies

### Supply Chain Execution Services

- RFP development and management of outsourcing design and selection
- Fulfillment technology solution development
- Multi-carrier logistics visibility, tracking and fulfillment solution design and deployment

### Sales and Operations Planning

- Sales and Operations Planning operations and technology
- Design of Outsource partner attainment performance management solutions

### Supply Chain Technology Services

- Supply chain technology audit
- IT Strategy
- Advisor services on software solutions
- XML collaboration design build advisor services
- DCRA also provides unique consulting technology products (e.g.):
  - Collaborative technologies to support supply chain messaging
  - XML search and query of diverse logistics and inventory events to achieve order commitment
  - Time phased netting of distribution, master planning and Sales and Operations Planning

For more information on DCRA, the Dynamic Logistics Synchronization and Visibility (DLSV) platform, the Order Commitment Solution, and Sales & Operations Solutions contact DCRA Inc© on 214 352 0868 or [DCRASolutions.com](http://DCRASolutions.com)



**DCRA Incã**  
**Supply Chain Solutions**